

THE ROLE OF PROFESSIONALS IN EDUCATION



This pamphlet, intended for parents and youth aged 14 and over, is designed to explain the role played by the various professionals in the education sector.

The Educational Services team, managed by Deborah Foltin, Director and Katia Tardif, Coordinator organizes **early education services, instructional services, special services, and complementary services.**

Below are the roles of the various professionals at the Centre de services scolaire du Littoral who support the school teams:

PSYCHOEDUCATOR

The **Psychoeducator** prevents, screens, helps, accompanies and evaluates the difficulties and adaptive capacities of students who have or are likely to have adjustment difficulties, and identifies attitudes and behaviours that have a negative impact on learning and social integration. She puts in place favourable conditions to develop and restore the student's autonomy and abilities, in interaction with his or her environment. She advises and supports school teams and parents.

Resource Person

→ Marie-Philippe Asselin, Ps.Ed.



SOCIAL WORKER

The **Social Worker** prevents, supports, screens and evaluates the social functioning of students and groups of students who are experiencing or are likely to experience emotional, social or academic difficulties; determines and implements a social intervention plan with the goal of supporting and restoring social functioning, fostering the optimal development of the student in interaction with his or her environment and facilitating the student's academic progress.

Resource Person

→ Kelly Fequet, S.W.

GUIDANCE COUNSELLOR

The **Guidance Counsellor** helps, advises, accompanies and evaluates psychological functioning, personal resources and environmental conditions in order to enable personal and professional choices adapted to individual characteristics and the environment, throughout the school career.

Resource Person

→ Jean-François Rodrigue, G.C.
→ Joannie Tardif, G.C.



COUNSELLOR IN REEDUCATION

The **Counsellor in Reeducation** identifies, helps and accompanies students who present or may present difficulties in adapting to their environment and helps them develop their autonomy. She advises and supports school teams and parents.

Resource Person

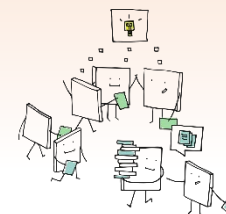
→ Tara-Lee Lavallée

PEDAGOGICAL CONSULTANT

The **Pedagogical Consultant** mainly supports teachers and school principals with respect to programs, course organization, classroom management and teaching and learning materials. She organizes professional development sessions based on the needs of the community in order to promote the development and quality of teaching.

Resource Person

→ Gabrielle Hervé



EXTERNAL RESOURCES

Depending on the student's needs and following an analysis of his or her file, the services of the following external professionals may be authorized by the school or the School Service Centre: **Speech-Language Pathology, Occupational Therapy, Psychology, Neuropsychology, and Regional Resources.**

SCHOOL AND CENTRE RESOURCES

The **EHDAA Attendant** helps the student with a disability to participate in activities related to his or her schooling. He assists the student in his movements, sees to his well-being, his hygiene and his safety.

The **Special Education Teacher** applies special education techniques and methods within the framework of an intervention plan for students with handicaps, social maladjustments or learning disabilities in collaboration with the multidisciplinary team.

The **Remedial Teacher** detects, evaluates and accompanies students who have or are likely to have learning difficulties, identifies their needs and abilities, plans and implements remedial programs aimed at correcting learning difficulties, cognitive abilities or skills, and advises and supports school teams and parents.

The **Resource Teacher** provides individualized support to at-risk students and helps them find solutions to their problems, accompanies and supports other teachers in adopting pedagogical practices conducive to dropout prevention, works in cooperation with the school's complementary educational services involved with at-risk students.